



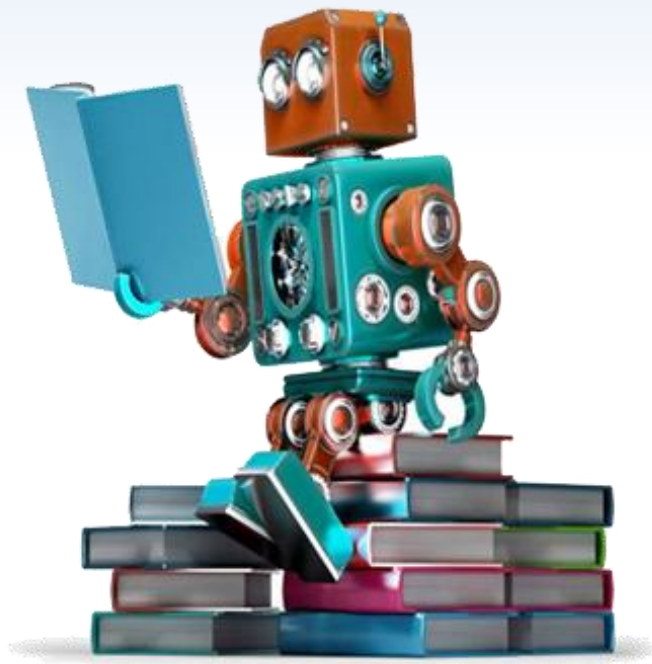
西北工业大学  
NORTHWESTERN POLYTECHNICAL UNIVERSITY

# 机器学习与人工智能

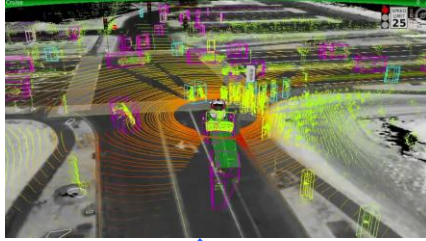
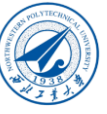
---

布树辉

[https://gitee.com/pi-lab/machinelearning\\_notebook](https://gitee.com/pi-lab/machinelearning_notebook)



# Future?



AI



# UAV

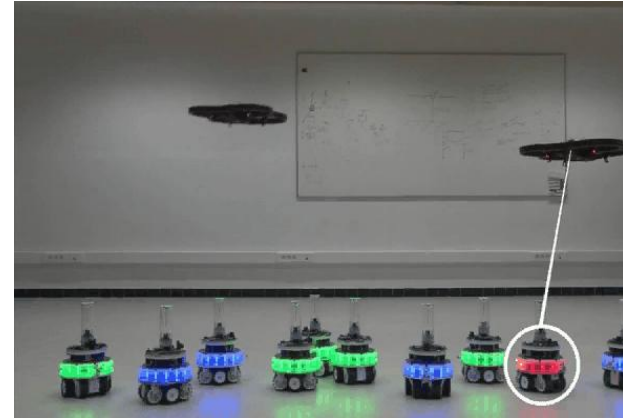
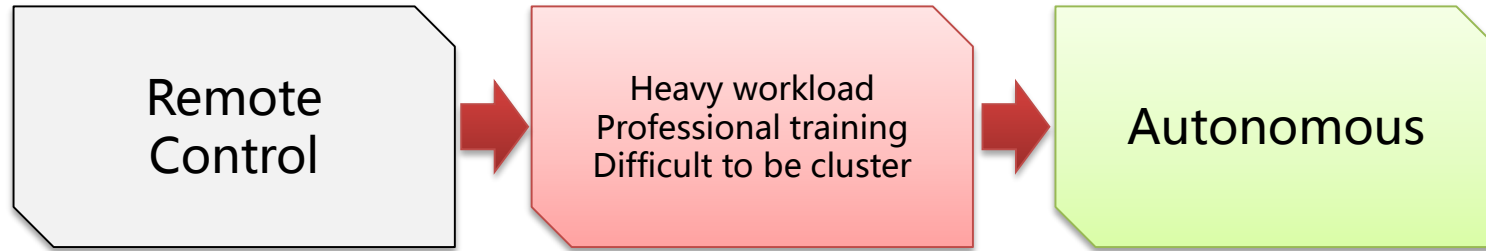


- Small, cheap
- No pilot
- Convenient
- Strong survivability

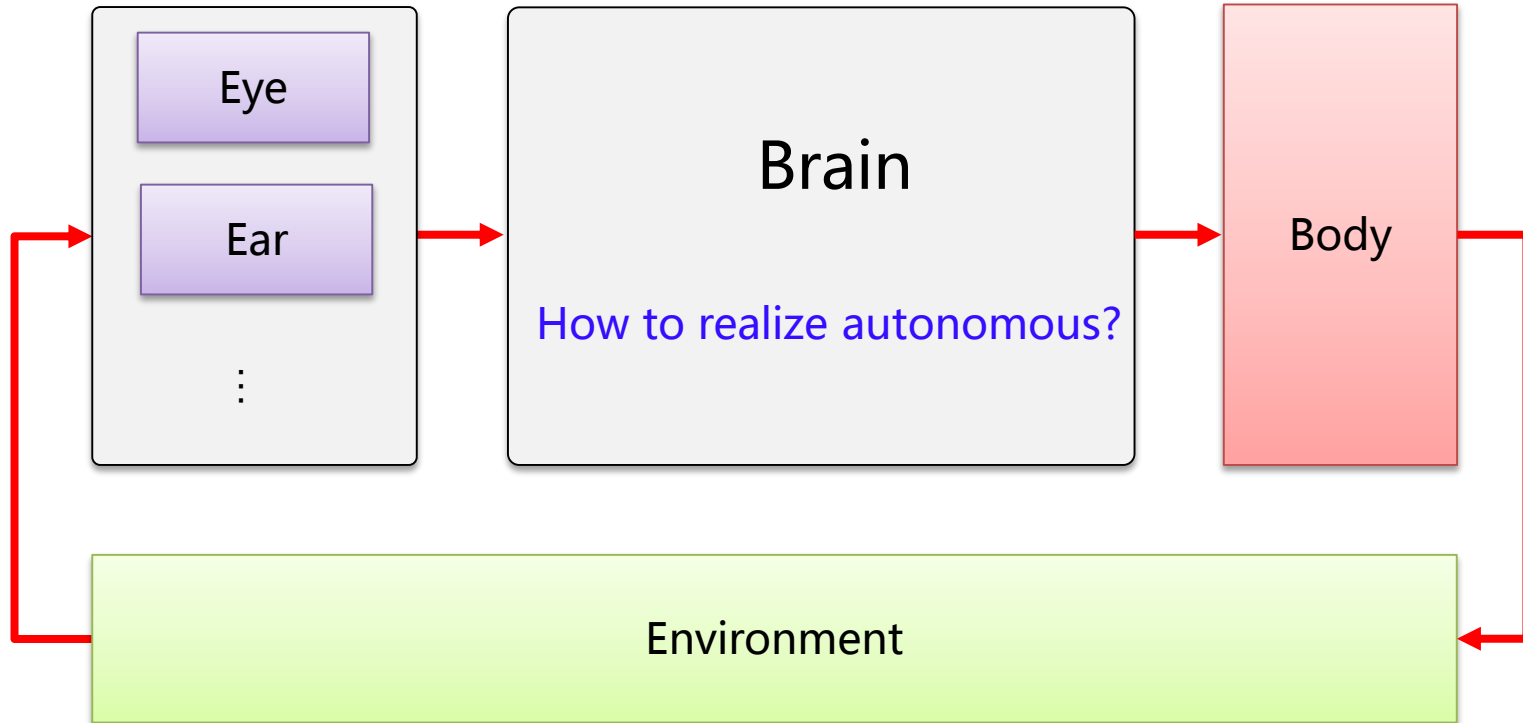
- Aerial photograph
- Attack
- Air platform
- General aviation



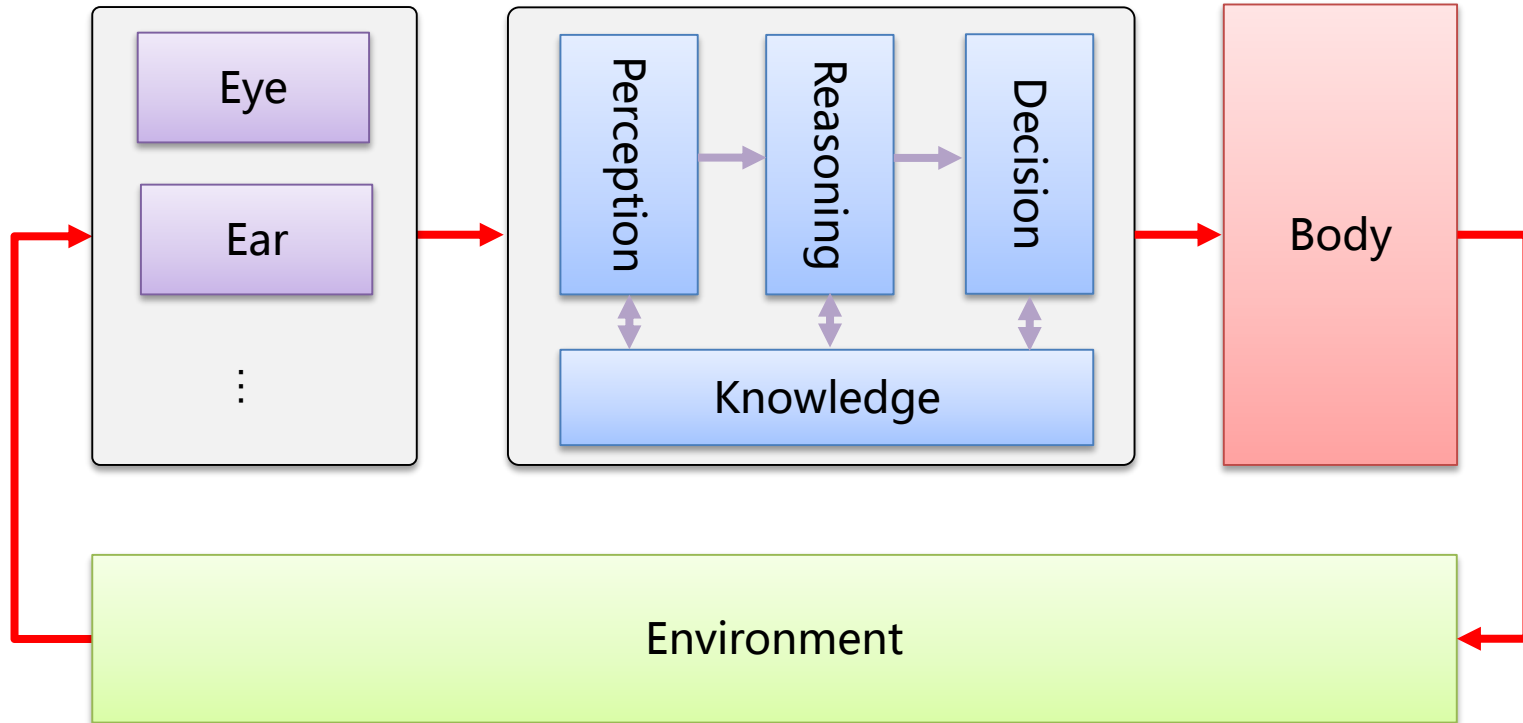
# UAV - Autonomous



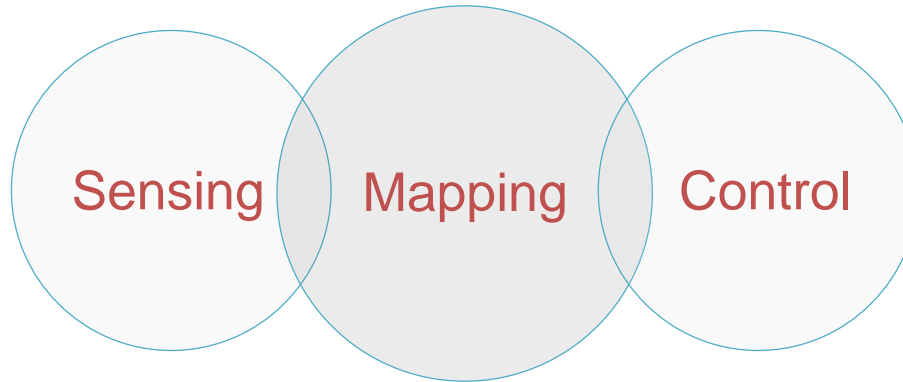
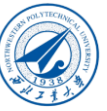
# How to Realize Autonomous?



# How to Realize Autonomous?

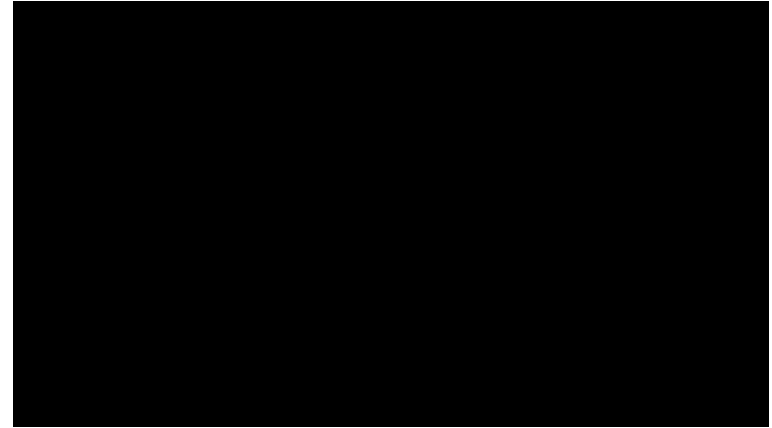


# New Challenges



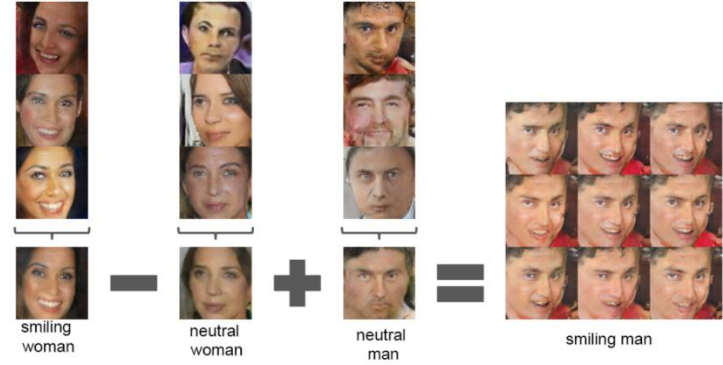
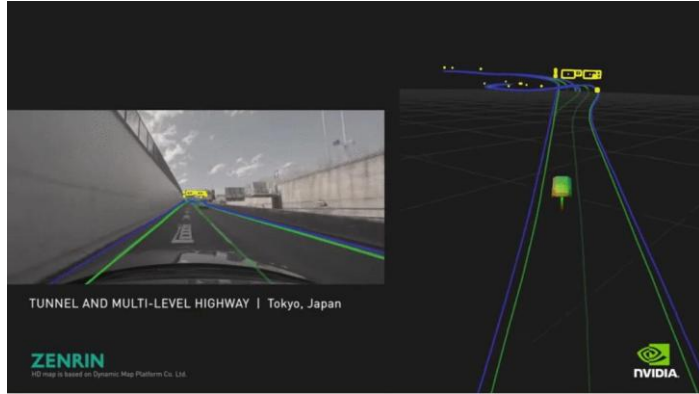
- Multi-type sensors: IMU, GPS, Image, LiDAR, RADAR ...
- High quality and real-time speed required
- Reasoning and knowledge are important for realizing strong AI

# Applications





# Applications



# Applications



## Build Keras Models

Build a model to classify images into 5 groups. The dataset has 25000 images, with an input shape of 500x500.

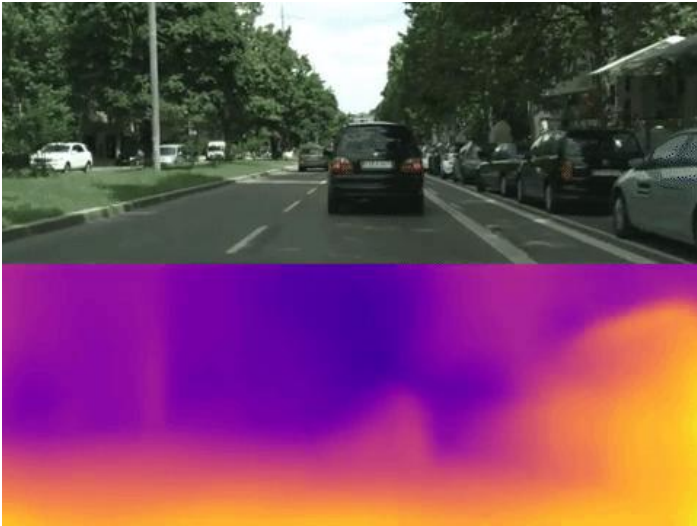
Generate Model

GPT-3 Automatic Keras Model

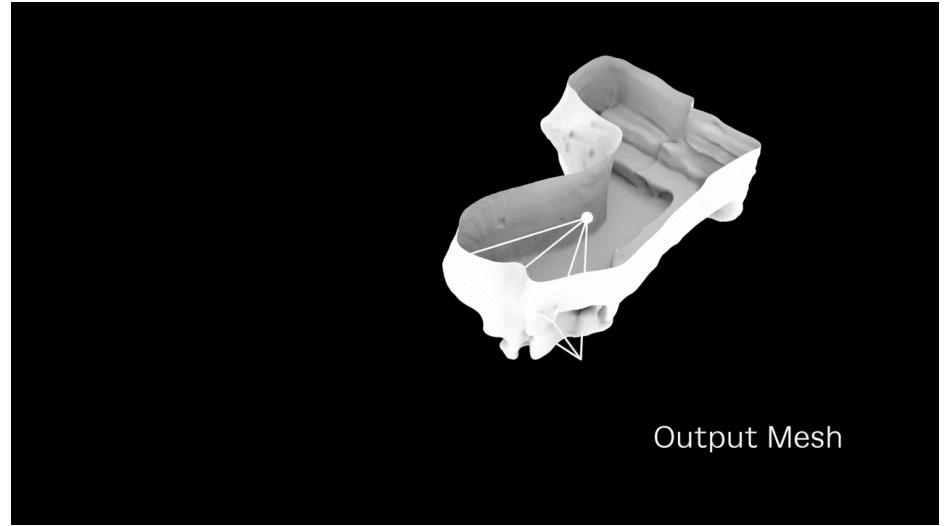
What would you like to know?

GPT-3 Automatic SQL

# Applications



Deep Learning based SLAM

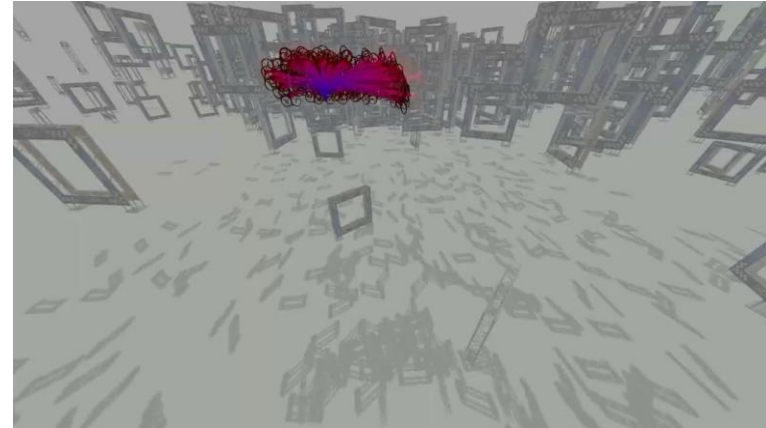


Deep Learning based 3D Reconstruction

# Applications

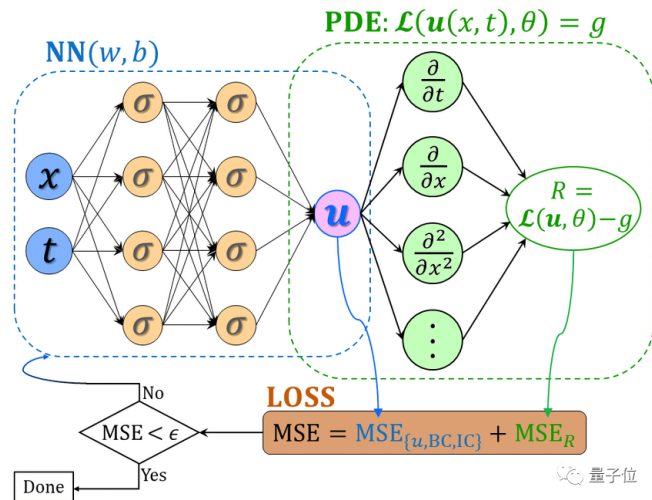


Robot Control

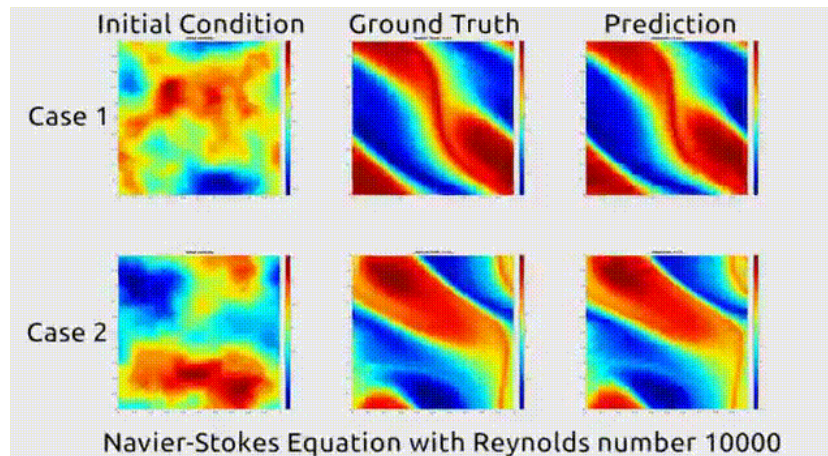


UAV Cluster Control

# Applications



PINN



Flow Estimation

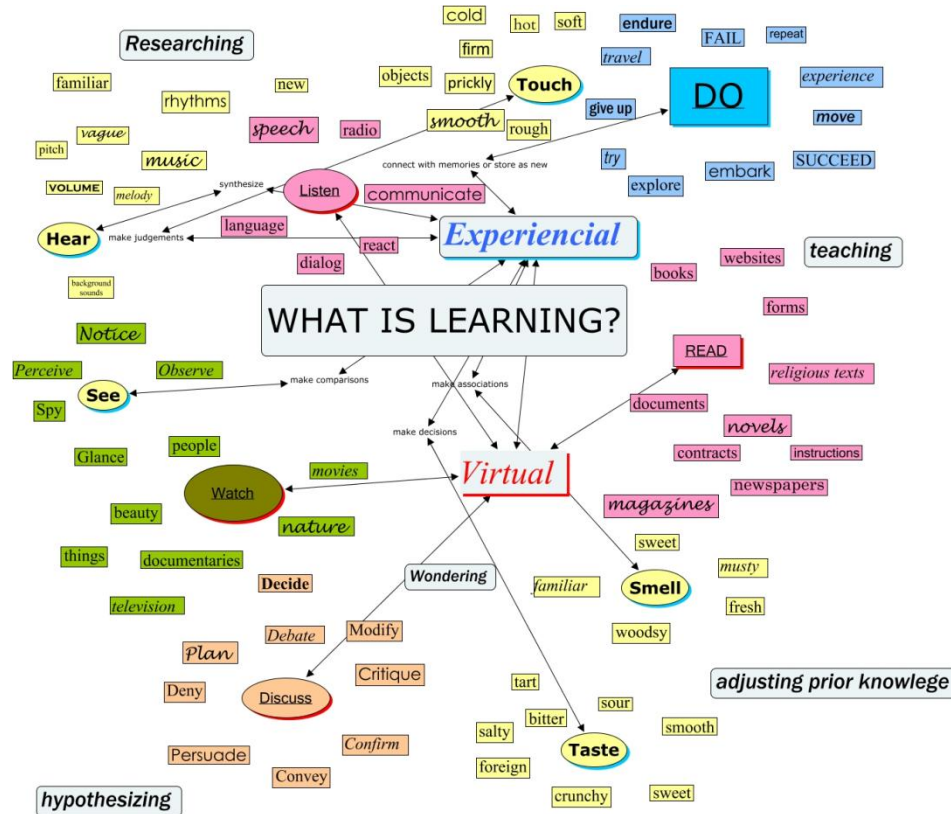




# How to Achieve Intelligence?



# How to Achieve Intelligence?



Learning is about seeking a predictive and/or executable understanding of natural/artificial subjects phenomena or activities from ...



# What is Machine Learning?

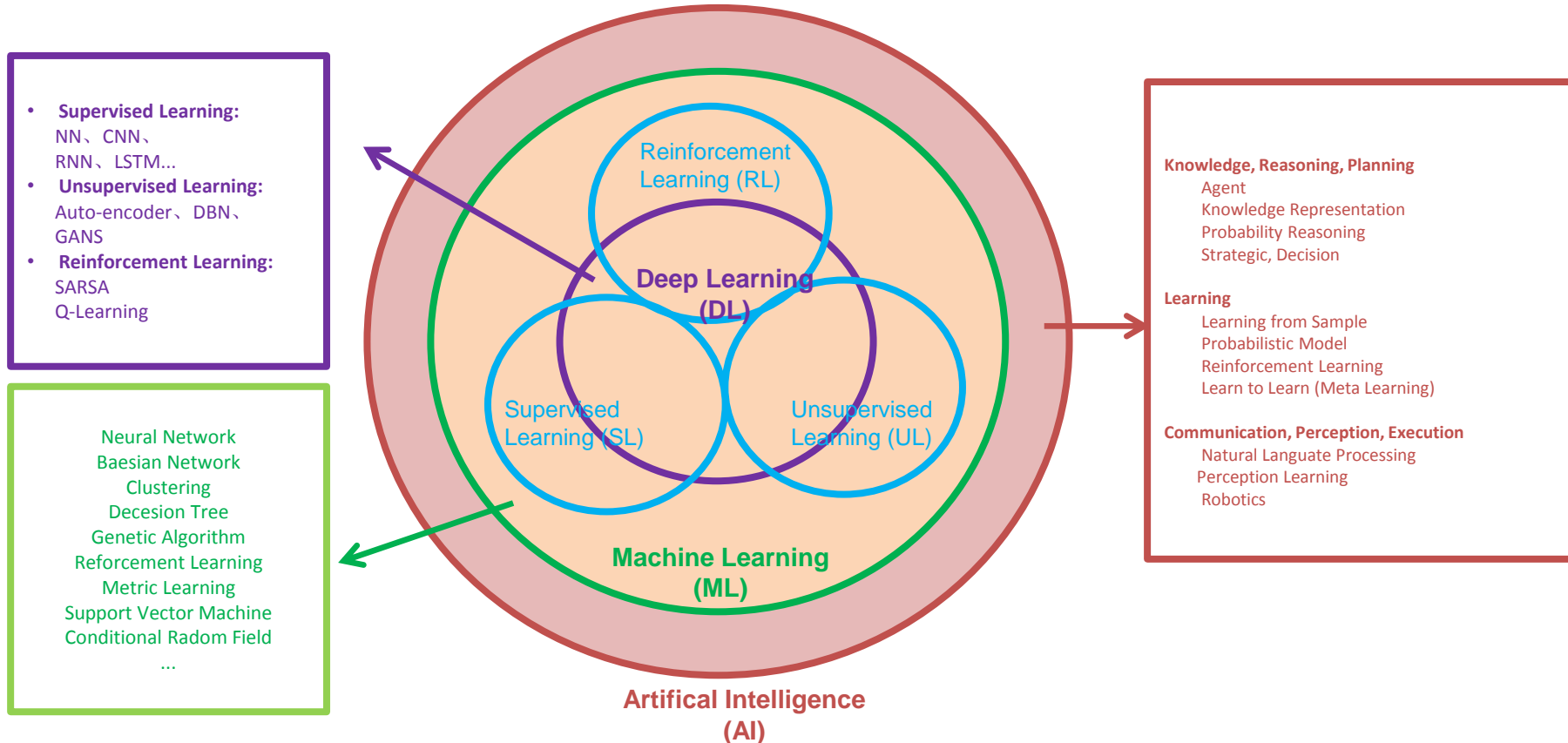
**Machine learning** seeks to develop theories and computer systems for

- Representing
- Classifying, clustering, recognizing
- Reasoning under uncertainty
- Predicting
- And reacting to
- ...

Complex, real world data, based on the **system's own experience with data**, and (hopefully) under a **unified model or mathematical framework**, that

- Can be formally characterized and analyzed
- Can take into account human prior knowledge
- Can generalize and adapt across data and domains
- Can operate automatically and autonomously
- And can be interpreted and perceived by human

# Machine Learning and AI

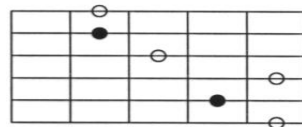
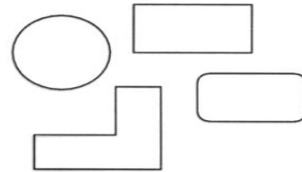
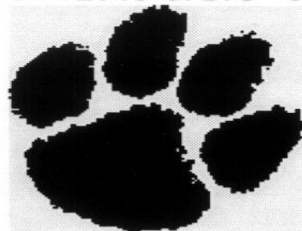
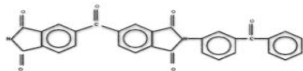


# Pattern?



“A pattern is the opposite of a chaos; it is an entity vaguely defined, that could be given a name.”

- Watanabe

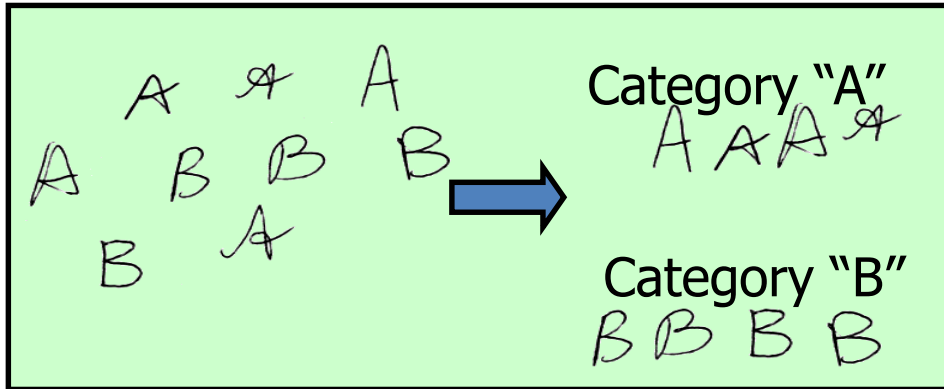


# Recognition

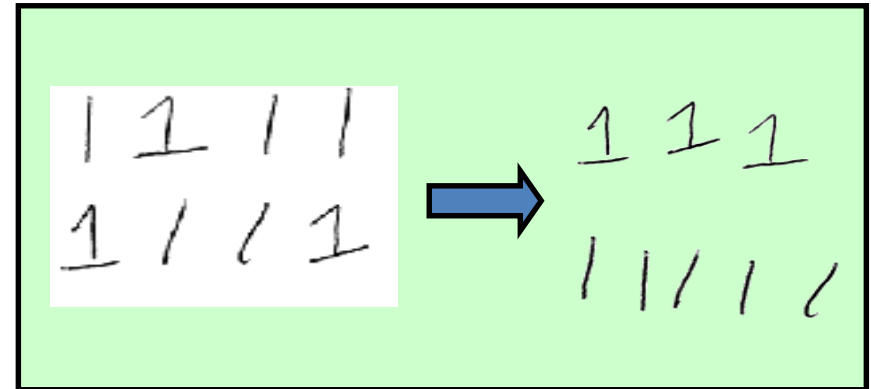


Identification of a pattern as a member of a category we already know, or we are familiar with

- **Classification** (known categories)
- **Clustering** (learning categories)



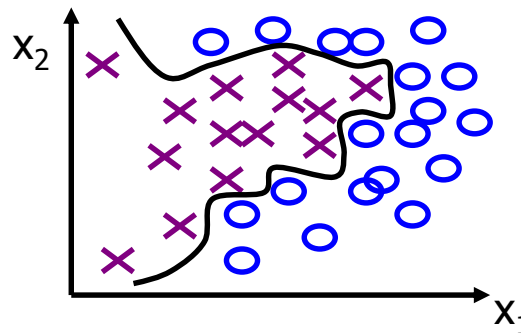
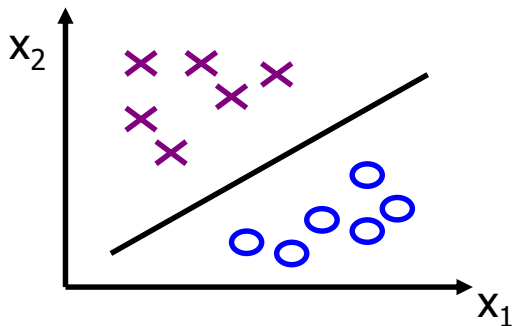
Classification



Clustering

# Representation

- Each pattern is represented as a point in  $d$ -dimensional feature space
- Choice of features and their desired invariance properties are domain-specific



- Good representation implies
  - small intra-class variation
  - large inter-class separation
  - simple decision boundary

# Intra-class Variability



The letter “T” in different typefaces

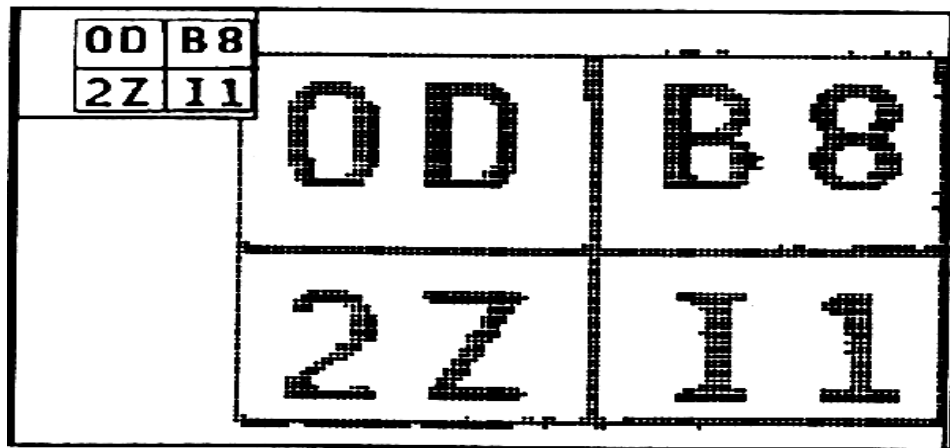


Same face under different expression, pose, illumination

# Inter-class Similarity

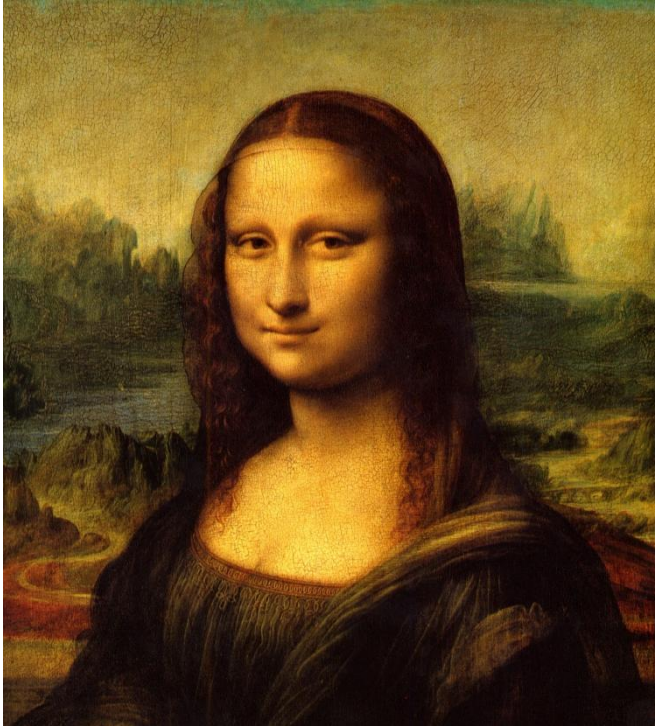


Identical twins



Characters that look similar

# Inter-class or Intra-class?

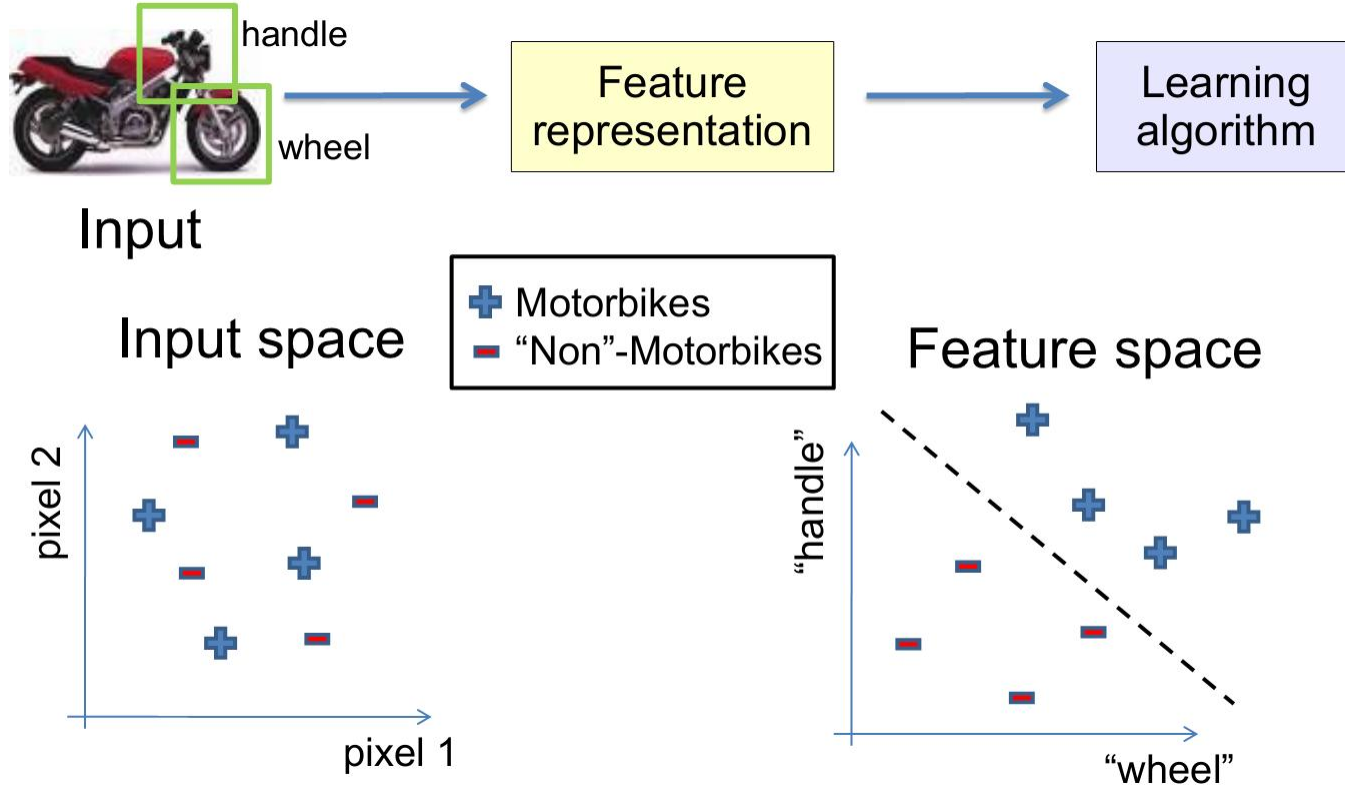




# Good Representation

- Should have some **invariant** properties (e.g., rotation, translation, scale, ...)
- Account for intra-class **variations**
- Ability to discriminate pattern classes of **interest**
- **Robustness** to noise, occlusion,...
- Lead to **simple decision** making strategies (e.g., linear decision boundary)
- Low measurement **cost**; real-time

# Good Representation



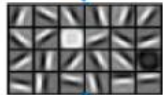
# Good Representation



3rd layer  
“Objects”



2nd layer  
“Object parts”



1st layer  
“edges”



Input

- Represent objects from low-level to high-level structure
- Can share the low-level representation for multiple tasks

# Deep Learning = Learning Hierarchical Representation

## Traditional Pattern Recognition: Fixed/Handcrafted Feature Extractor



## Mainstream Modern Pattern Recognition: Unsupervised mid-level features

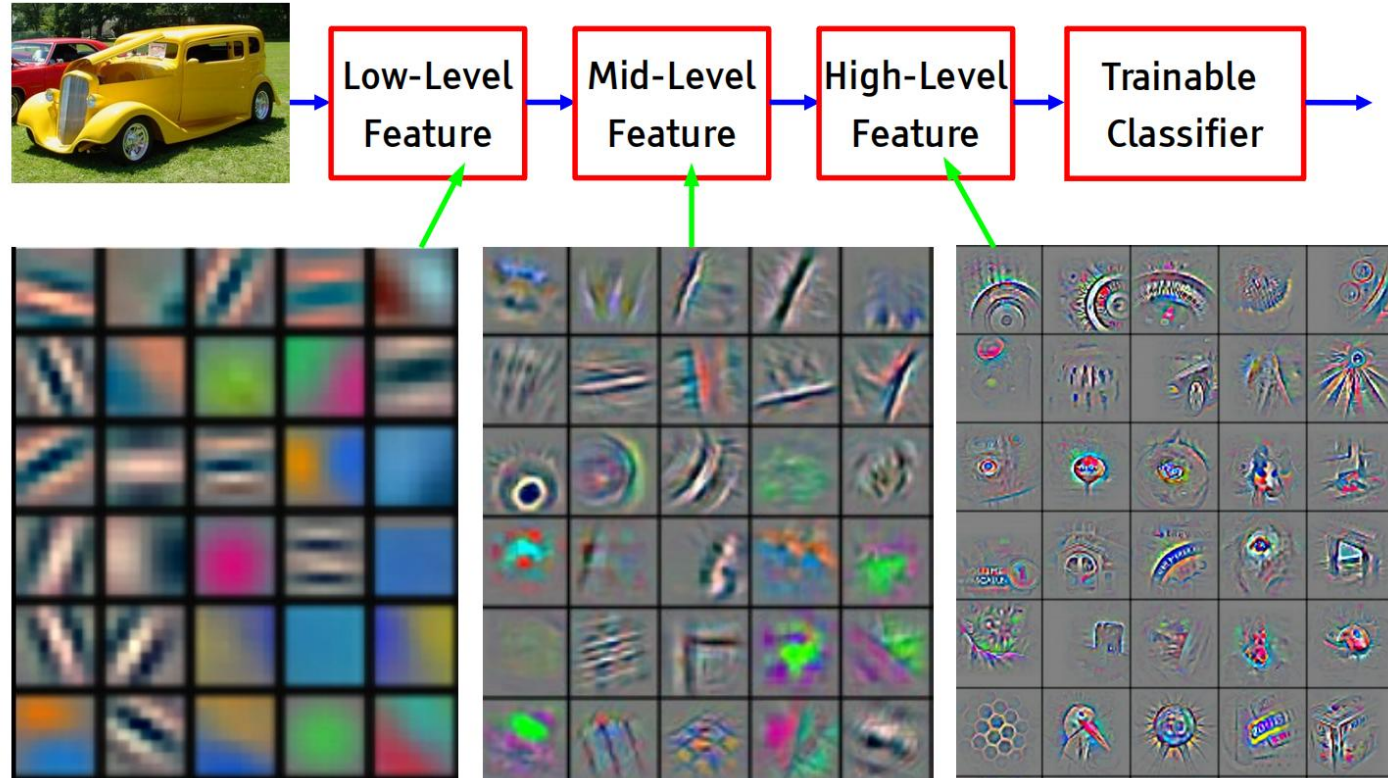


## Deep Learning: Representations are hierarchical and trained



# Deep Learning = Learning Hierarchical Representation

It's deep if it has more than one stage of non-linear feature transformation

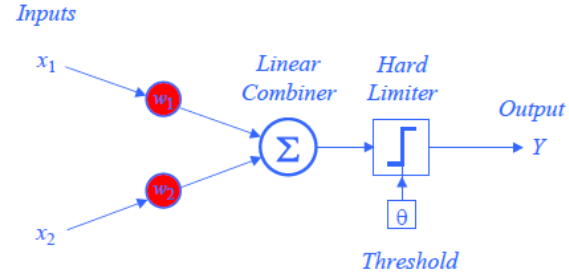
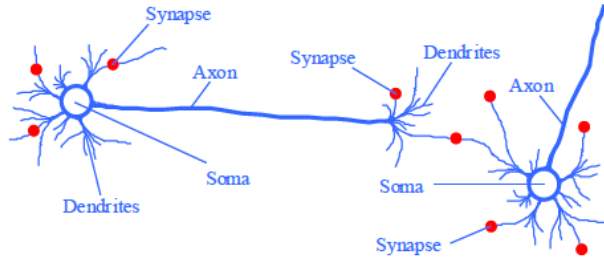




# Neural Networks and Deep Learning

# Perceptron and Neural Networks

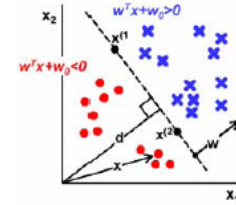
- From biological neuron to artificial neuron (perceptron)



- Activation function

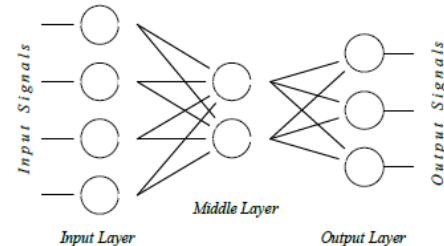
$$X = \sum_{i=1}^n x_i w_i$$

$$Y = \begin{cases} +1, & \text{if } X \geq \omega_0 \\ -1, & \text{if } X < \omega_0 \end{cases}$$

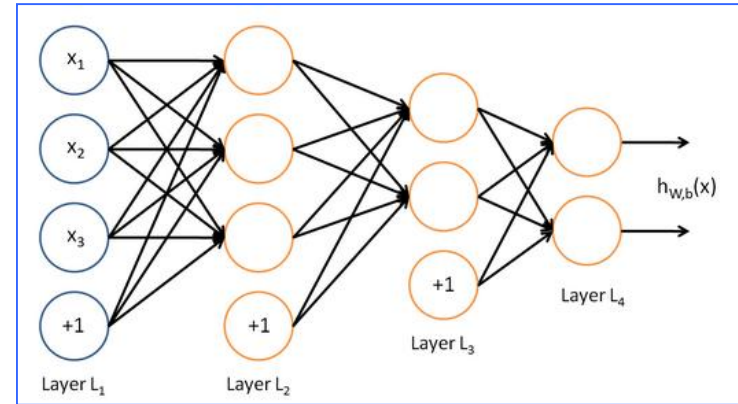
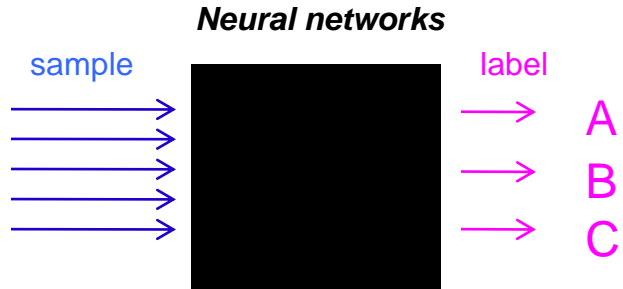


- Artificial neuron networks

- supervised learning
- gradient descent

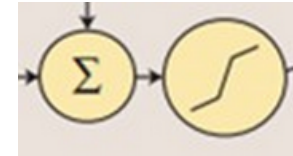
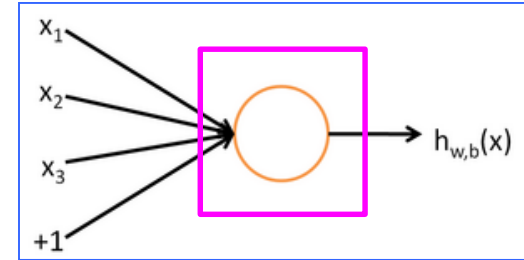
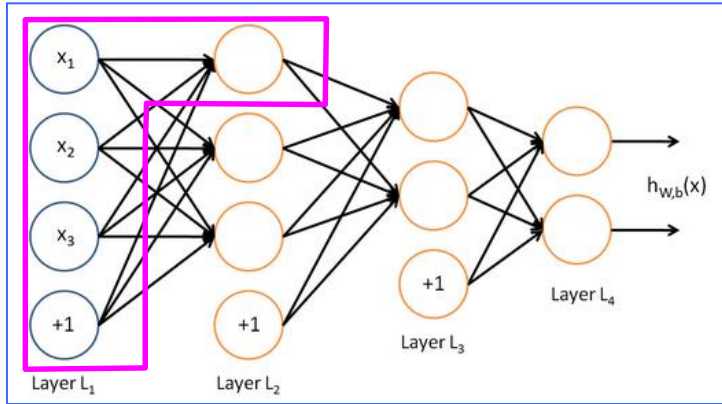


# Neural Networks





# Neural Networks - Feedforward Networks



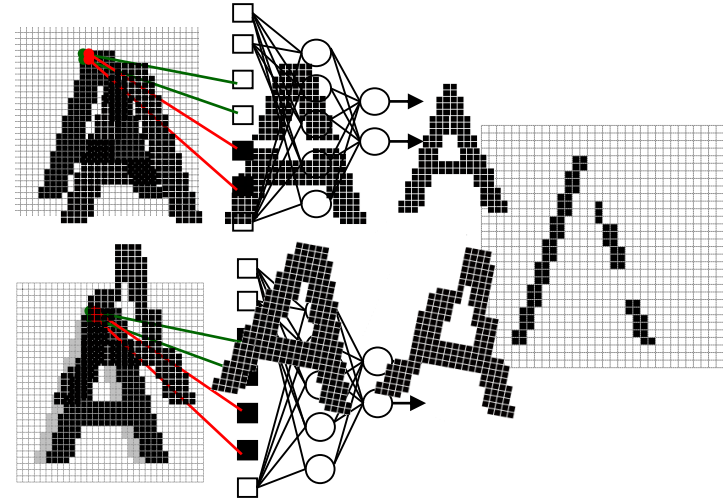
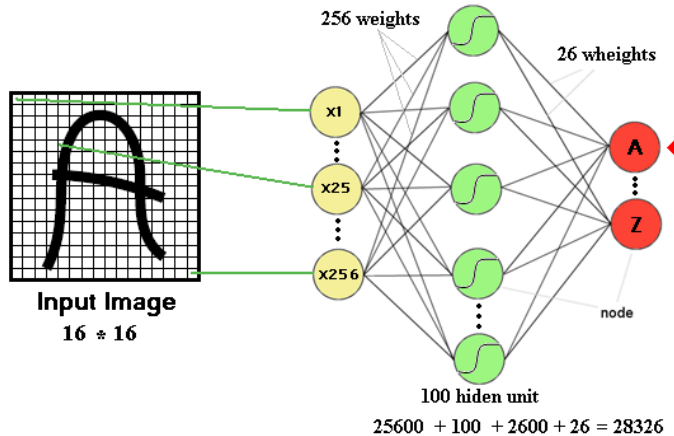
$$h_{W,b}(x) = f(W^T x) = f(\sum_{i=1}^3 W_i x_i + b)$$

$$f(z) = \frac{1}{1 + \exp(-z)}$$

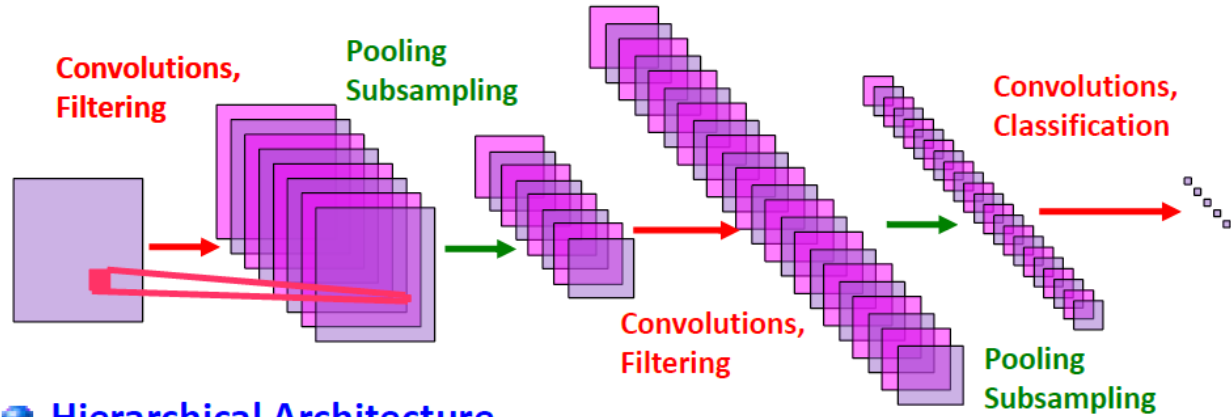


# Neural Networks - Disadvantages

- The number of **trainable parameters** becomes extremely **large**
- Little **or no invariance** to shifting, scaling, and other forms of distortion



# Convolutional Neural Network: Multi-stage Trainable Architecture



## ● Hierarchical Architecture

- ▶ Representations are more global, more invariant, and more abstract as we go up the layers

## ● Alternated Layers of Filtering and Spatial Pooling

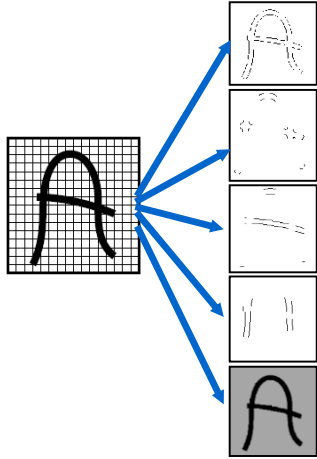
- ▶ Filtering detects conjunctions of features
- ▶ Pooling computes local disjunctions of features

## ● Fully Trainable

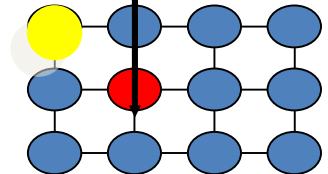
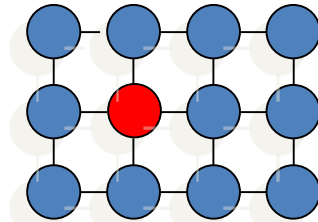
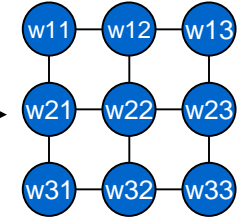
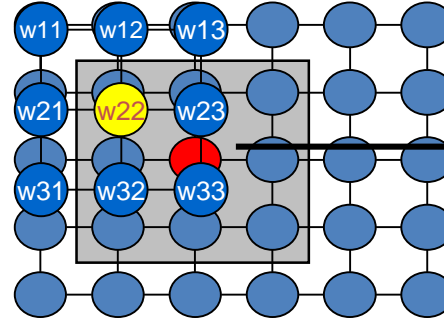
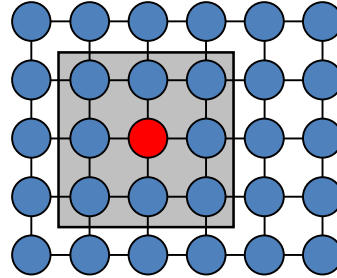
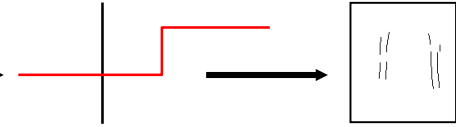
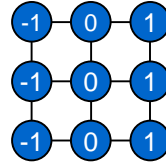
- ▶ All the layers are trainable

# Convolutional Layer or Feature Extraction Layer

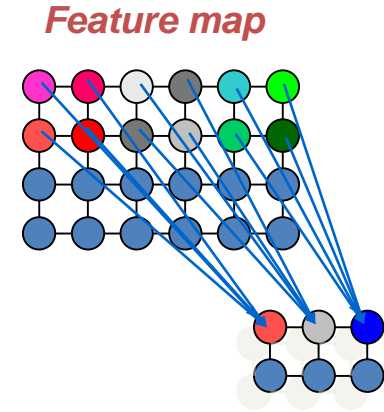
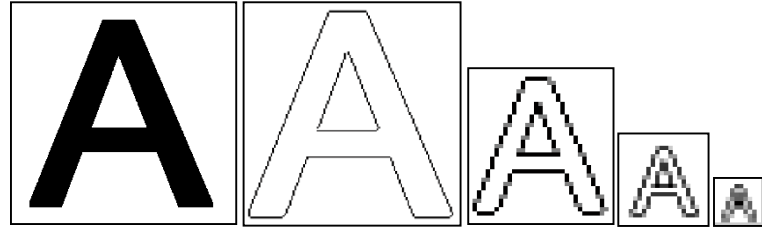
features



Convolve with



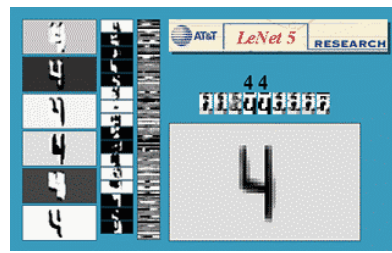
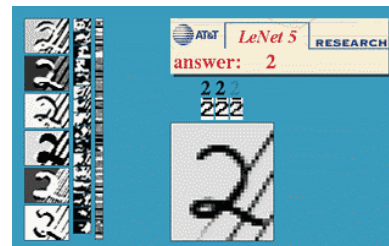
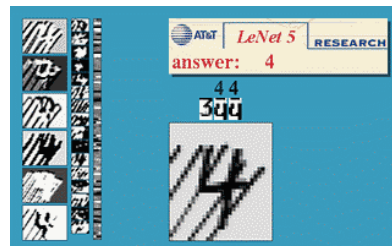
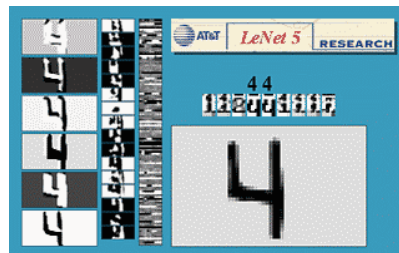
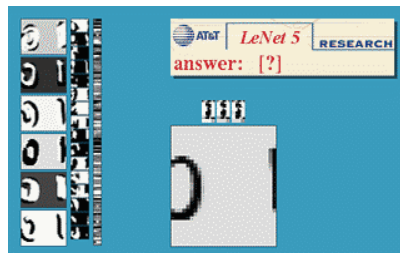
# Subsampling Layer



- By reducing the **spatial resolution** of the feature map, reduce the effect of **noises** and **shift or distortion**.
- The **weight sharing** is also applied in subsampling layers



# Convolutional Neural Networks - Hand-Writing Recognition



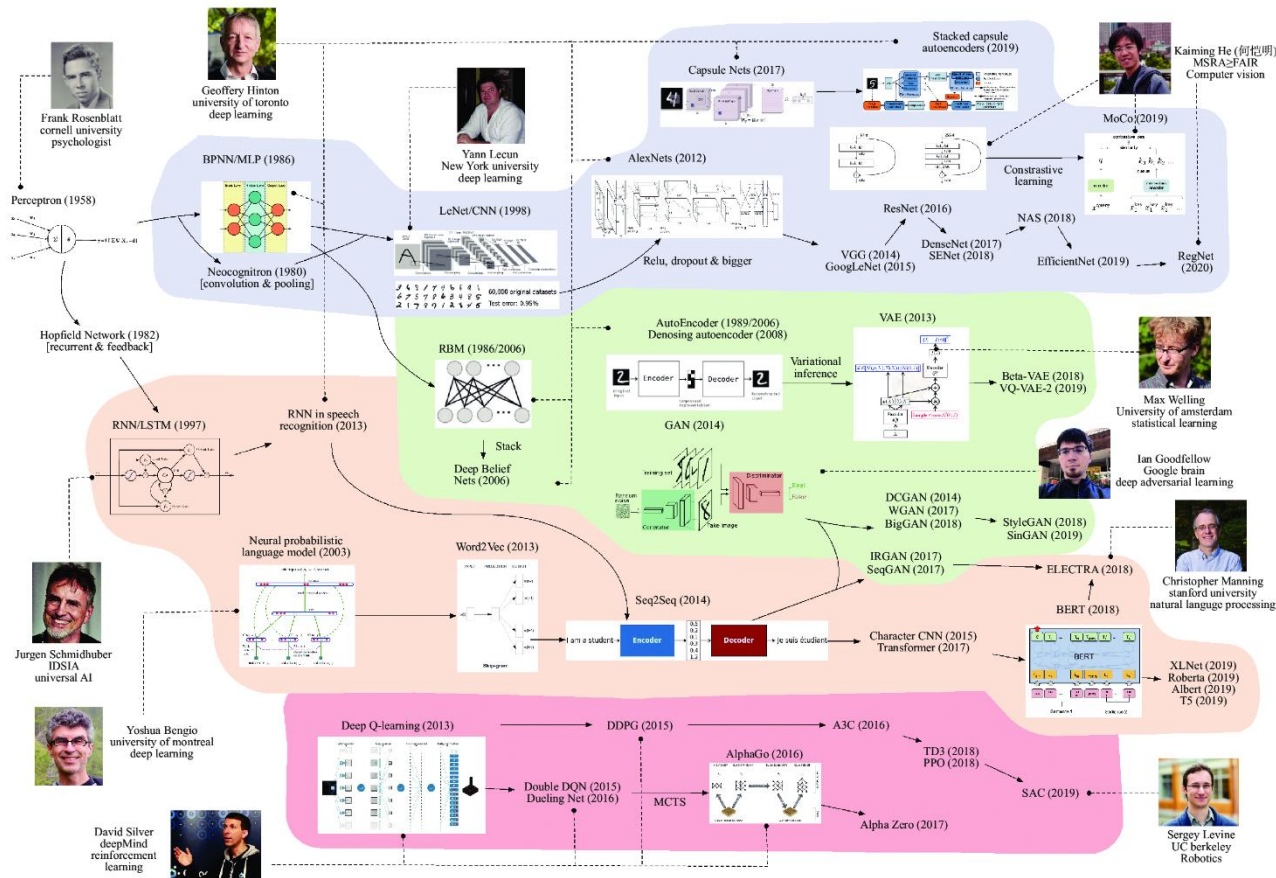




# Summary



# Summary - Methods

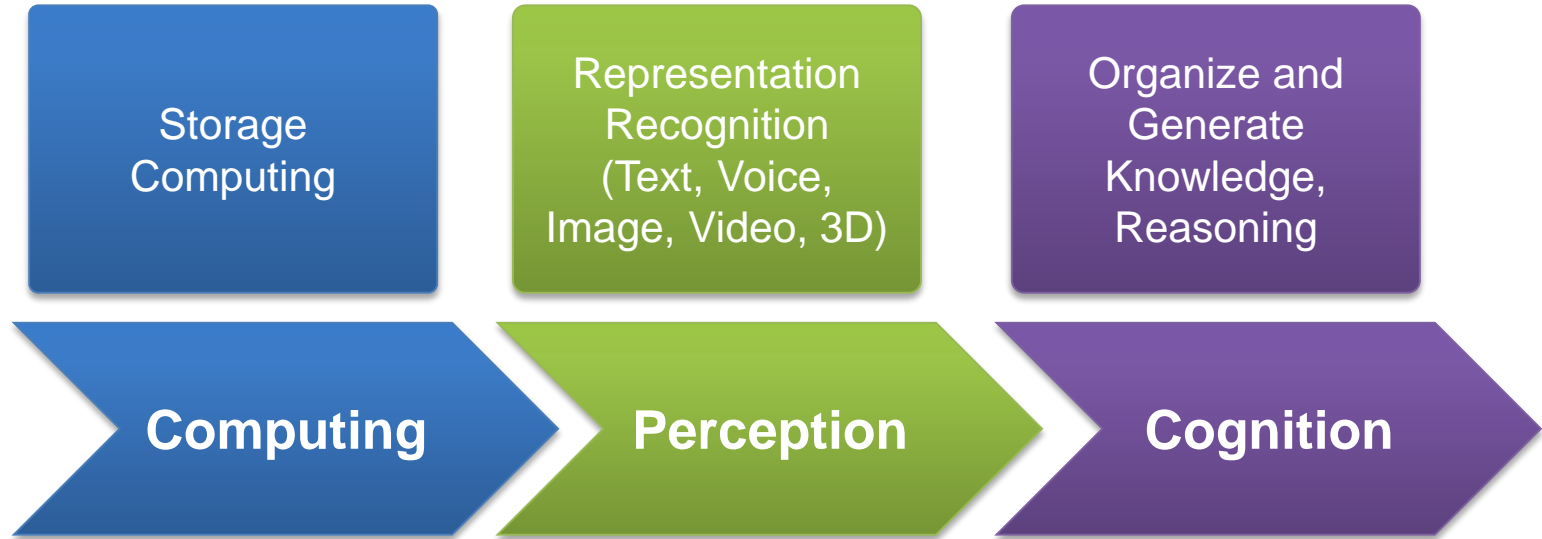


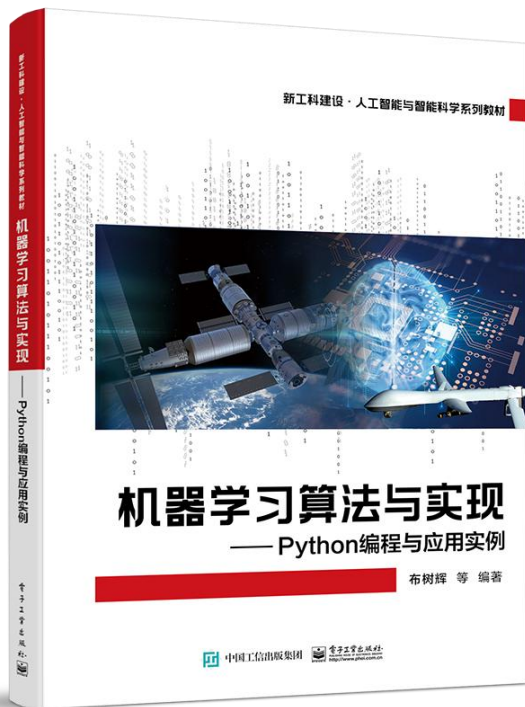
# Summary - Problems

---

- General-purpose intelligent system is a very difficult problem
- Successful systems available in well-constrained domains
- All components are coupled
- No single approach has been found to be optimal for all problems
- Use of object models, constraints and context is necessary for identifying complex patterns
- Careful sensor design and feature extraction often lead to simple models

# Summary - Future





<http://www.adv-ci.com/blog/mlai>

以机器学习的算法原理与实现贯穿始终，  
通过算法、数据结构、面向对象、编程实  
现一步一步地引入

让读者无需额外学习算法与数据结构等知识，就能理  
解并应用机器学习到各自的专业。



主页



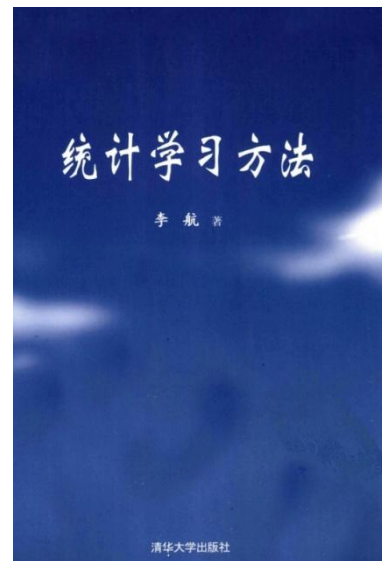
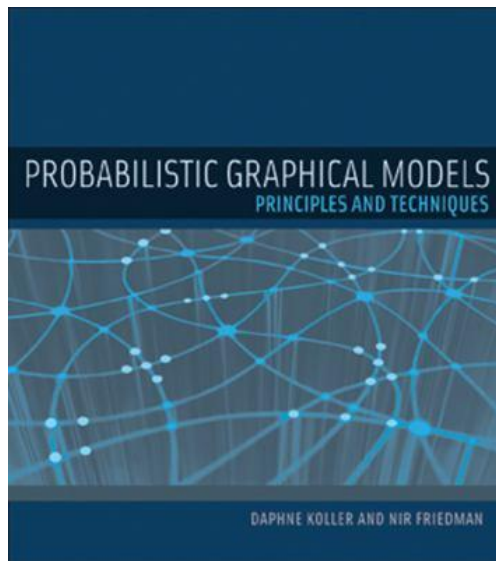
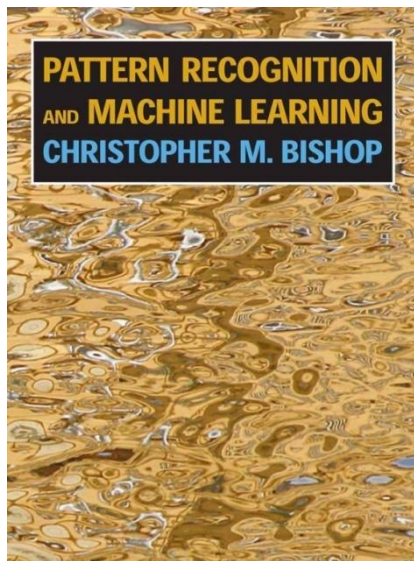
当当网



京东



# Other Books



# Materials



Notebook: [https://gitee.com/pi-lab/machinelearning\\_notebook](https://gitee.com/pi-lab/machinelearning_notebook)

Homework: [https://gitee.com/pi-lab/machinelearning\\_homework](https://gitee.com/pi-lab/machinelearning_homework)

Video: <https://www.bilibili.com/video/BV1oZ4y1N7ei>



Notebook



Homework



**THANK YOU**



[www.adv-ci.com](http://www.adv-ci.com)